

wamery ALKALINE WATER FILTER PITCHER



Definitions

Whenever used, the following terms identify safety and property damage messages and designate a level of hazard seriousness.

⚠️ - This is the safety alert symbol. It alerts you to potential personal injury hazards. Obey all safety messages that follow this symbol to avoid possible injury or death.

DANGER - Indicates an imminently hazardous situation, which, if not avoided, will result in death or serious injury. Usage of this signal word is limited to the most extreme situations.

WARNING - Indicates a potentially hazardous situation, which, if not avoided, could result in death or serious injury.

CAUTION - Indicates a potentially hazardous situation, which, if not avoided, may result in minor/moderate injury.

NOTICE - Addresses practices not related to personal injury, such as product and/or property damage.

READ ALL INSTRUCTIONS BEFORE USE.

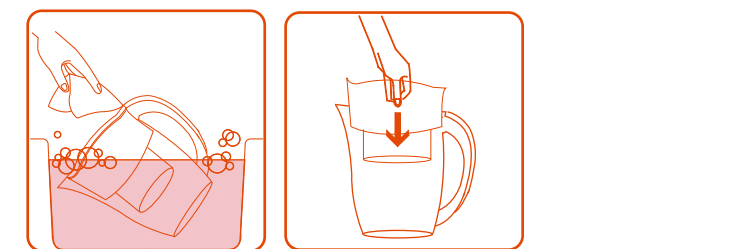
- ⚠️ WARNING - To reduce the risk of serious personal injury:**
- This product is intended to filter tap water only. Do not use water of unknown quality or that has been microbiologically impaired with this product.
 - If official instructions have been issued to boil tap water before consuming it, the water placed into this product must also be boiled, either before or after passing through the Filter.
 - If persons with weak immune systems, such as babies or the elderly, have been advised to boil tap water before consuming it, the water placed into this product for consumption by these persons must also be boiled, prior to or after filtration.
- ⚠️ CAUTION - To reduce the risk of personal injury and/or product/property damage:**
- Use only a Wamery™ or a Brita® filter cartridge with the included Pitcher. The use of any other filter cartridge will produce unknown results and is not recommended.
 - Place only cold or room temperature water into the product for filtering. Avoid passing warm or hot water through the Filter.
 - Do not apply concentrated cleaning agents such as heavy oxidants, bleach, chlorinated solvents, or the like to any part of this product. Do not use abrasive pads on the product.
 - Do not boil any part of this product.
 - Do not place any part of this product in a dishwasher for cleaning.
 - If the Pitcher or Reservoir is broken or cracked, replace the whole product. If the Filter is damaged, replace only the Filter.

Wamery water filtration components

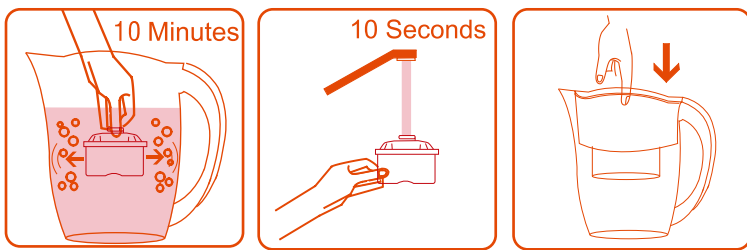
The water filtration system reduces impurities in tap water, while improving the taste, smell, and clarity. It also provides a more economical and environmentally friendly alternative to buying bottled water. Save money and enjoy the fresh, crisp taste of filtered water.

Parts

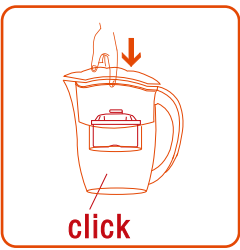
- ### To Set Up and use
1. Remove the Lid by pulling up on both sides.
 2. Remove the Filter (in packaging) from the Reservoir and set it aside.
 3. Hand wash the Pitcher, Reservoir, and Lid with a soft cloth or sponge and a mild liquid soap. Rinse and let dry.
- NOTICE:** The scrubber side of a sponge will slightly scratch the surface of the Pitcher, so use the soft side.
4. Place the Reservoir back into the Pitcher as shown in the diagram; the tallest part of the Reservoir must face the front of the Pitcher.



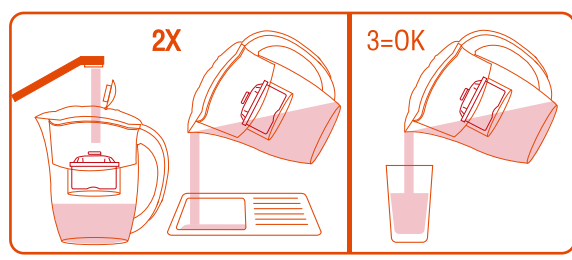
- ### 5. Prepare and Install the Filter:
- **Use cold or room temperature water.**
- a. Wash your hands and then remove the Filter from its package. Soak it upright in water for 10 minutes.
 - b. Rinse the Filter under running water for 10 seconds.
 - c. Press it firmly down into the tube of the Reservoir to ensure a tight seal.



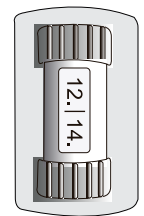
6. Attach the Lid.



- ### 7. Fill the Pitcher:
- **Always use cold or room temperature water when filling the Pitcher.**
- Press down on the tab next to the Filter Life Indicator to open the hole in the Lid. Fill the Reservoir with water and allow all the water to filter through. Discard the water and repeat. The third pitcher of water is ready for drinking.
- Always allow all the water in the Reservoir to pass through the Filter before pouring the water.



- ### 8. Set the Filter Life Indicator:
- The filter last for 42 gallons, which represents 1 month if you fill it twice or 3 times a day. If you refill once or twice a day, then it could last up to 2 months. So, every time you replace it, set the manual calendar the date you need to replace the cartridge.



Mechanical calendar alert system

- ### For best results:
- Keep enough water in the Pitcher to maintain the bottom of the Filter in the water. This will prevent the Filter from drying out. If the Filter has not been in contact with water for two days, soak it for 10 minutes and then reinstall it.
 - Store the Pitcher in the refrigerator or in a cool location. If the water has been sitting for several days, discard it and refill the Pitcher with fresh water.

Replacing the Filter

When the date on the Filter Life Indicator is reached, replace the Filter. Pull it out of the Pitcher by its Loop. Repeat steps 5-8 above to install a new Filter.

NOTE: This filters may also be used in Brita® Pitcher

- ### Care and Maintenance
- NOTICE:**
- Throw the used product on the recycling waste bin

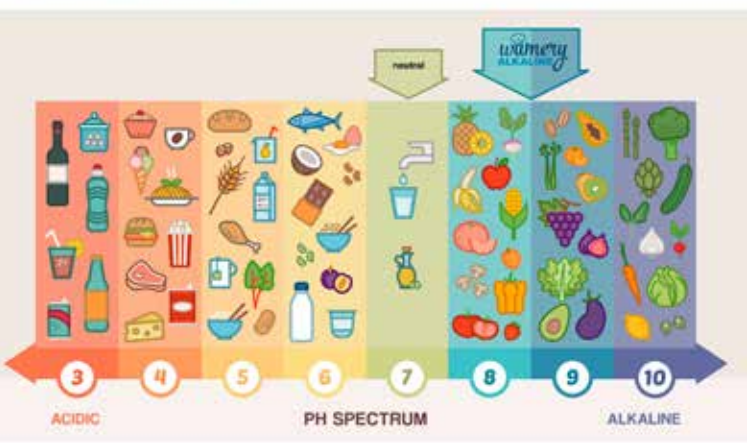
To Clean:

- Clean as described in step 3 above. Look closely for microorganism deposits, which most likely will occur on the rims and edges of the parts. A toothbrush designated for cleaning is a good tool for removing these.

Warranty

Wamery™ warrants to the customer that FOR THE PERIOD of THIRTY (30) DAYS from the date of purchase, the Wamery™ Water Filter Pitcher, when used strictly in accordance with instructions, has the effects on municipally treated, potable tap water described in the enclosed literature.

ACID / ALKALINE FOOD COMPARISON CHART



THE ACID / ALKALINE BALANCED DIET

20% ACIDIC FOODS
80% ALKALINE FOODS

THE 7 MOST ALKALINE FOODS

HEALTH BENEFITS ON YOUR BODY

- IMPROVES ENERGY AND VIGOR
- PROMOTES ENDOCRINE HEALTH
- BOOSTS BONE DENSITY
- BETTER SLEEPING
- PREVENTS CANCER
- HELPS WITH WEIGHT MANAGEMENT